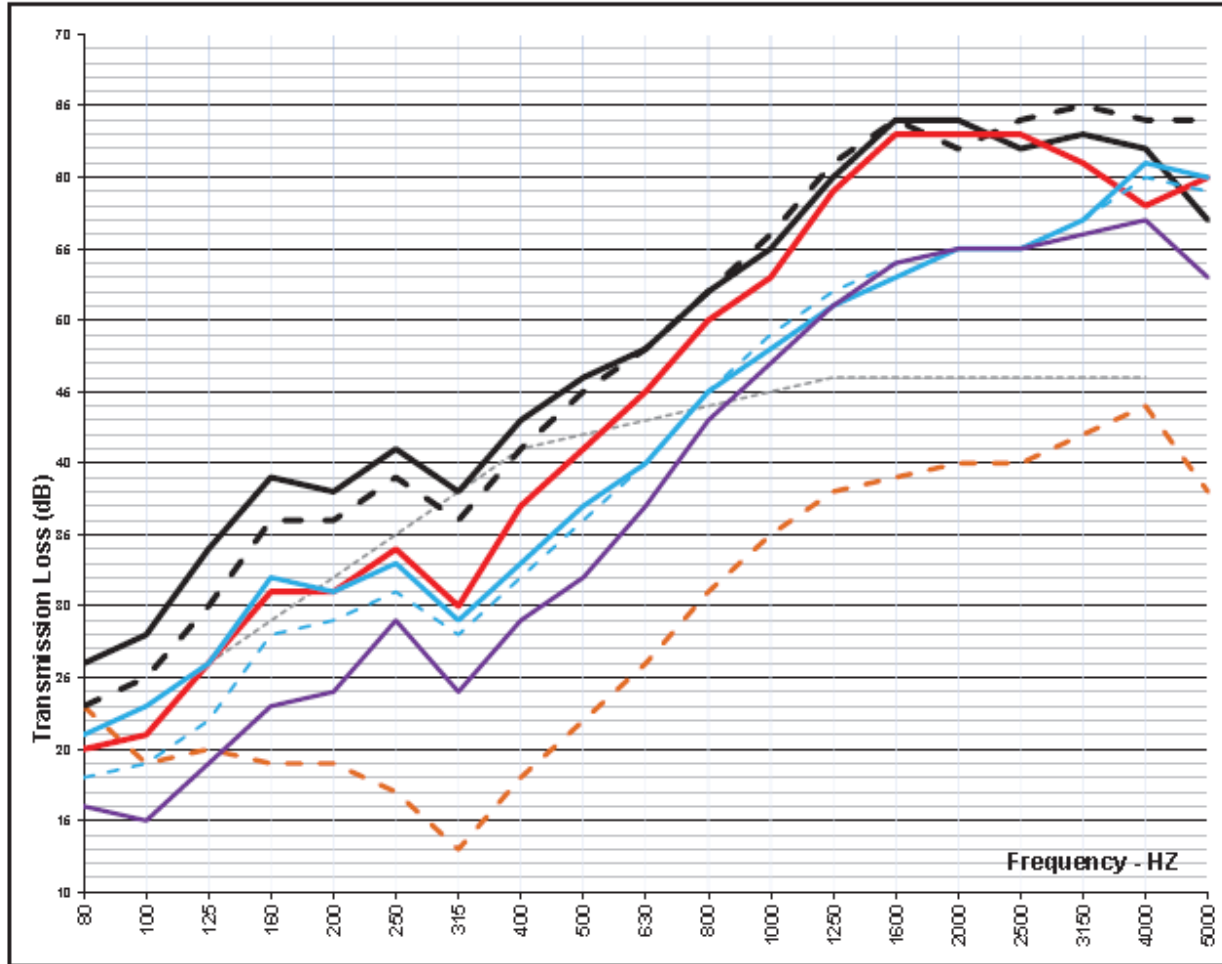


# QUIET WINDOWS

## OUR COMPETITION - A COMPARISON



All tests shown are windows mounted behind an Anderson 100 Series window with 3" of air space

- Red: Quiet Window<sup>®</sup> using 3/8" acrylic
- Purple: Competitor using 1/4" acrylic
- Blue(dotted): Competitor using 1/4" laminated glass
- Blue: Competitor using 3/8" laminated glass
- Black (dotted): Soundproof Window using 1/4" laminated glass
- Black: Soundproof Window using 3/8" laminated glass

This graph shows why our tests are valid for OUR windows, but NOT for "similar" windows with identical glass.

1/3 Octave Band (Hz)	STC	OITC	80	100	125	160	200	250	315	400	500	630	800	1000	1250	1600	2000	2500	3150	4000	5000	
42 BT C Curve																						
Anderson Series 100	25	22	23	19	20	19	19	17	13	18	22	26	31	35	38	39	40	40	42	44	38	
Soundproof Window 1/4" 3" AS	48	37	23	25	30	36	36	39	36	41	45	48	52	56	61	64	62	64	65	64	64	
Soundproof Window 3/8" 3" AS	50	40	26	28	34	39	38	41	38	43	46	48	52	55	60	64	64	62	63	62	57	
Quiet Window 3/8" Acrylic	42	33	20	21	26	31	31	34	30	37	41	45	50	53	59	63	63	63	61	58	60	
Competitor 1/4" Lami glass	40	30	18	19	22	28	29	31	28	32	36	40	45	49	52	54	55	55	57	60	59	
Competitor 3/8" Lami glass	41	33	21	23	26	32	31	33	29	33	37	40	45	48	51	53	55	55	57	61	60	
Competitor 1/4" Acrylic	36	27	18	15	19	23	24	29	24	29	32	37	43	47	51	54	55	55	56	57	53	

These tests accurately compare Soundproof Windows with our competition. We were very careful to make certain the competition windows were installed to get the best possible acoustic results. Seals and the acoustic design of the window frames are critical for good noise reduction results.